

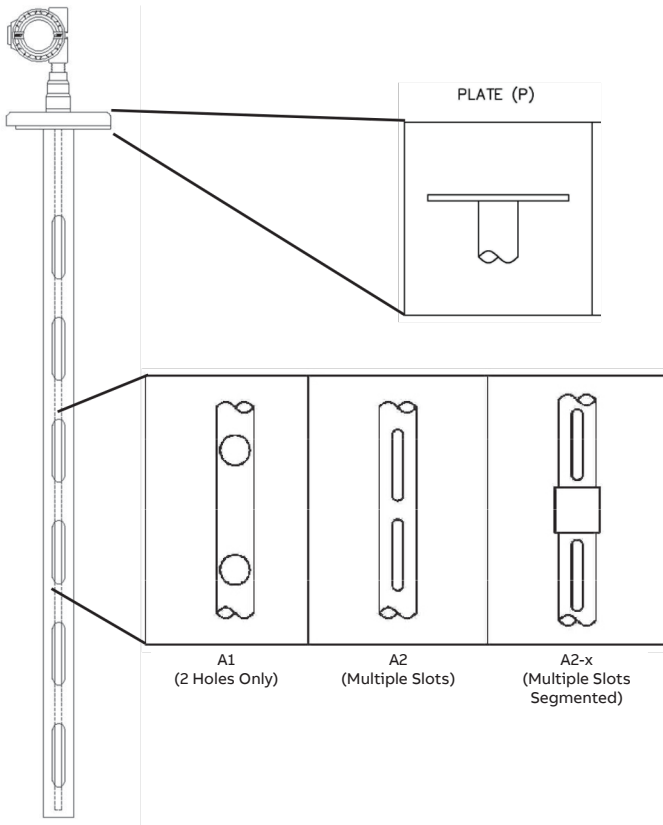
---

ABB MEASUREMENT & ANALYTICS | DATA SHEET

# STW

## Level Measurement Accessory





Application Note: For interface or dirty service applications, the A2 (A2-x) styles are required.

Furnished with:  
 AT100 A38 MS501 MT5000 / MT5100 Other  
 Note: 1. MS50 requires the use of A1 (2 holes only) configuration.

Model Number: \_\_\_\_\_

Additional Notes or Comments: \_\_\_\_\_

TABLE 1			
Flange Destination			
Size	Rating	Raised Face	RTJ
2"	150#	SR21	SJ21
	300#	SR23	SJ23
	600#	SR26	SJ26
	1500#	SR215	SJ215
	150#	SR251	SJ251
	300#	SR253	SJ253
2-1/2"	600#	SR256	SJ256
	1500#	SR2515	SJ2515
	150#	SR31	SJ31
	300#	SR33	SJ33
3"	600#	SR36	SJ36
	900#	SR39	SJ39
	1500#	SR315	SJ315
	150#	SR41	SJ41
4"	300#	SR43	SJ43

For flanges greater than this, please consult the factory.

TABLE 2	
Plugs (NPT):	
2"	P2
3"	P3
4"	P4
6"	P6

## Ordering Information

### STW/a/b/c/d/e:

/a Pipe Material	
CST	Carbon Steel
SS4	304L Stainless Steel
SS6	316L Stainless Steel
HSC	Hastelloy C-276
Consult factory for other material types	
/b Pipe Size	
1.5	1.5" NPS (GWR and Capacitance Only)
2	2" NPS (GWR and Capacitance Only)
2.5	2.5" NPS (GWR and Capacitance Only)
3	3" NPS
4	4" NPS
6	6" NPS
Always select a pipe size smaller than the well connection size.	
<b>Note:</b> For pipe sizes 3, 4 and 6" - If the stilling well is used in conjunction with the AT100, AT500 or MS50, the OD of the float must be 1" smaller than the stilling well size.	
/c Well Connection (Drawings on Back)	
Plate1 - pipe welded directly to a plate to fit between instrument and vessel mounting flanges (xxxx - code from Table 1)	
P-xxxx	
/d Style	
A1	2 holes on each end of the pipe
A2	Multiple slots spaced evenly along the pipe length
Segmented pipe with multiple slots spaced evenly along the pipe length	
(x - number of pipe segments)	
A2-x	Consult factory for custom styles / configurations.
/e Insertion Length	
xx	
<b>Note:</b> Max length of 6ft is used in conjunction with AT100, AT500 or MS50	

SAMPLE PART NUMBER: STW/SS6/1.5/P-SR21/A2/36"

## Contact us

ABB Inc.  
 Measurement and Analytics  
 125 E. County Line Road  
 Warminster, PA 18974 USA  
 Tel: +1 215 674 6000  
 Fax: +1 215 674 7183  
 Email: quotes.ktek@us.abb.com  
 Service email: ktek-service@us.abb.com

**Note**  
 We reserve the right to make technical changes or modify the contents of this document without prior notice. With regard to purchase orders, the agreed particulars shall prevail. ABB does not accept any responsibility whatsoever for potential errors or possible lack of information in this document.

We reserve all rights in this document and in the subject matter and illustrations contained therein. Any reproduction, disclosure to third parties or utilization of its contents - in whole or in parts - is forbidden without prior written consent of ABB.

Copyright© 2020 ABB  
 All rights reserved